

1-071 Compression Latch Pr20.1

Tool operable, IP65



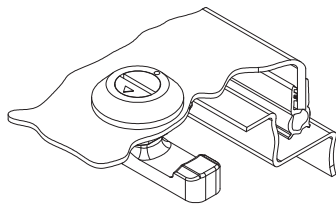
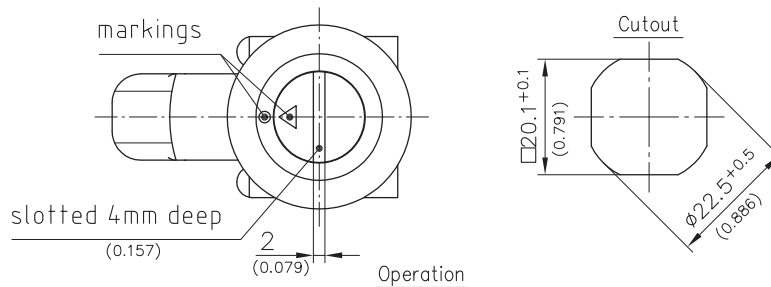
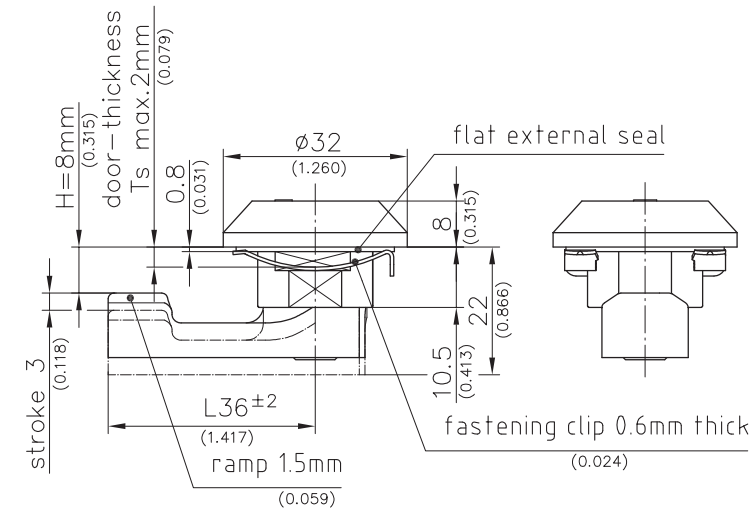
Product Notes:

- Minimal internal protrusion - Maximum 22mm (0.866)
- Fixed cam H-dimension 8mm (0.315), L 36mm (1.417)
- To latch - turn clockwise
- To unlatch - turn counter clockwise
- Water and dust tight according to IP65, DIN EN 60529
- Aligning marks indicate closed and compressed position
- The door remains latched during the first 90° turn while compression is released from the seal allowing any pressure inside the cabinet to escape before the door is fully opened
- Fasten to panel with clip - maximum thicknesses 2mm (0.079)
- Application inside sealed area
- Provides 3mm (0.118) compression

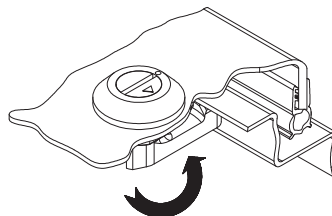
- Pre-assembled Quarter-Turn can be installed in cutout

Material:

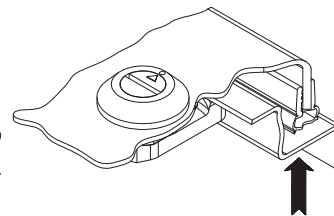
- **Housing, insert and cam:** Zinc Die, Black
- **Fastening clip:** Stainless Steel
- **Flat external seal:** NBR



open, unlatched position



First 90° rotation: the cam latches behind the frame into the locked position. The door cannot be opened.



A further 90° rotation will pull the already latched cam 3mm (0.118) towards the frame: the seal is compressed, the door is latched and free of play.

Compression Latch with cam and insert

Other inserts and cams, price and delivery time on request

Part No.

291-9101